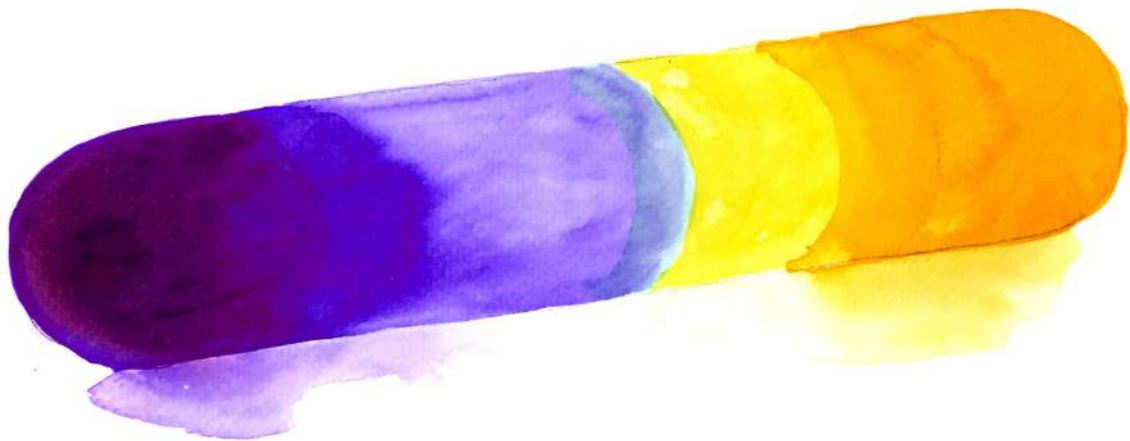

dossier de presse

nathalie junod ponsard

Figura serpentinata
act II



Nathalie Junod Ponsard, *Substance* preparatory drawing, 2022, watercolour.

/// opening
Wednesday
July 6th 2022
from 6pm to 9pm

Following *Figura serpentinata* - act I, an in situ installation by Nathalie Junod Ponsard, the gallery is pleased to present the second act, a solo show by the artist featuring drawings, paintings, watercolours, films and glass works produced in collaboration with the CERFAV (Centre européen de recherche et formation aux arts verriers), from Thursday 7th to Saturday July 30th.

act II : Thursday 7th to Saturday 30th July

Substance, 2022

Enamelled glass sculptures

These glass sculptures – in line with my research on light and wavelengths as a medium creating immersive locations with new densities – offer a closed and smooth ensemble with internal and external parts; light goes through a whole. On their surfaces, saturated colours are differentiated and either complete each other or juxtapose in a translucent, transparent or luminous blur and some opacities develop into new substances.

Attracting a tension, coming from one side of these hemispheric-bottomed sculptures to the other, the oblong and shiny shape and the visible bi-chromatia, highlighting the two-part composition, evoke the galenic shape of a capsule.

The scale chosen to create the *Substance* series allows the eye to dive into the matter and colours of the sculptures and to dissolve into the chromatic radiances.

When the retina is delighted, Plato gives to the Greek word for colour “pharmakon” the meaning of “remedy”, granting it curative potency.

Nathalie Junod Ponsard, June 8th 2022



Nathalie Junod Ponsard, *Substance*, 2022, enamelled glass sculptures

biography

Nathalie Junod Ponsard creates artworks and luminous installations modifying the density of spaces and unsettling our usual landmarks. Her installations, as a result of several experimentations, fill lightful locations with pure and saturated wavelenghts troubling the senses and arousing, among other feelings, a physiological modification of our perceptual markers.

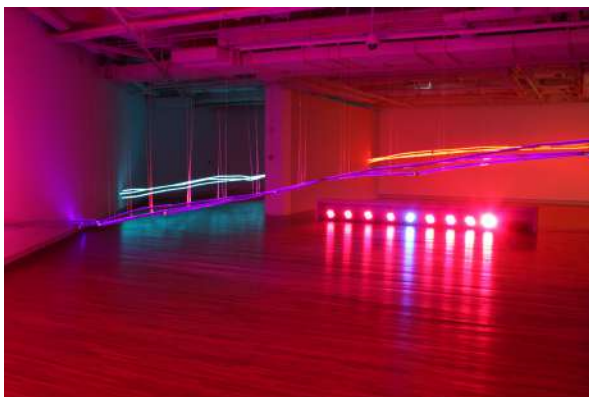
Her works had been the centre of many international exhibitions and she participated in biennial contemporary art shows. Among her most important exhibitions, we can name *Circular Wandering*, a work on the Hildesheim's law court during the Internationale Licht Kunst Biennale in Germany (2020), the Luxelakes A4 Art Museum with a major work for the inaugural exposition in 2015 (Chengdu, China), the Museum of Contemporary Art (MoCA) at Chengdu (China, 2014) – the Museum of Contemporary Art of Rome (MACRO), Rome, 2011 – a double exhibition at the Galerie Delacroix and at the Palais Moulay Hafid (Tanger, 2011) – the Modern Art Gallery or the Ouralski Guéologuitcheski Mouzeï [Ural's Geological Museum], Ekaterinburg, Russia, 2010 – the Palazzo Farnese (for the Franco-Italian contemporary art process *Luce di Pietra* 2007) – the Palazzo de Esposizioni, Rome 2007, - the Bauhaus Dessau, Germany, 2004 – the Guggenheim Gallery (Chapman University), Los Angeles, 2002 – the Singapour Art Museum (SAM, Biennial), Singapour, 2001, the Hong Kong People's Fringe Festival and the French May in Hong Kong. The artist was France's representative during the Western China International Art Biennale 2017 that took place at the Inner Mongolia Art Museum, Hohhot, China.



Nathalie Junod Ponsard, *Circular Wandering*, in situ on the Courthouse. International Light Biennial in Hildesheim, Germany. EVI LICHTUNGEN. From 23 to 26 January 2020 © Sara Foerster courtesy de l'artiste et baudoin lebon.



Nathalie Junod Ponsard, *Dédoublement*, 2019, glass, ink, Led projectors and programming, 260 x 150 x 40 cm. Commissioned by the Centre national des arts plastiques CNAP, France. © Guillaume Thomas



Nathalie Junod Ponsard, *Slipping Light*, 2014.
Solo exhibition at the Museum Contemporary Art (MoCA) in Chengdu, China.

In 2014, a retrospective exhibition was held simultaneously in the Museum Contemporary Art (MoCA) and in the Wuhan Greenland Centre in Chengdu, China. In 2010 and 2011, the Fonds National d'art contemporain (FNAC), the Mobilier National and in 2019 the Centre national des arts plastiques (CNAP) purchased some of her works.

baudoin lebon



Nathalie Junod Ponsard, *Thickness of light*, 2013.
Installation at the EDF Foundation, exhibition from 5 October to 10 November 2013.



Nathalie Junod Ponsard, *Odyssee*, 2021.
A carpet work for the Murat staircase at the Elysée Palace, 73m2.
Commissioned by the Mobilier National © Guillaume Thomas

In France, the luminous works created in their environment are exhibited at the Musée de la Chasse et de la Nature: *Twilight* (2018), *Thickness of Light* at the Espace Fondation EDF (2013) – *The Edge of the Visible One* (2014), commissioned by the Centre des Monuments Nationaux for the Basilica of Saint-Denis, immersive installations for the La Science de l'art Biennial (Essonne) – *Spacial Relativity*, which immerse the Institut des Arts Visuels, Orléans (2009) – *Persistent Horizon* (2008) on the Maison Hermès. Nathalie Junod Ponsard's work was exhibited in national museums, like the Centre Pompidou (2005), the Passerelle Centre d'Art Contemporain in Brest or in the Gaîté Lyrique, Paris (2004).

Her luminous artworks extend and spread on various inside or outside locations; *Deep Water* in the Pontoise pool for the first Nuit Blanche (2002), in a skating rink in Montréal (2011), at the Lake Geneva's pier, on the roof of a Singaporean skyscraper, at the Maison Neyrand in Lyon, at the Grande Galerie du Forum des Halles in Paris (2005 – 2007). Her work can also be seen on outstanding locations: the Jantar Mantar observatories of New Delhi (Festival of France in India, 1989), the Château d'Assas in Vignac, on the walls of the Buddhist temple of The Temple in Beijing (2004), the Maison Louis Carré (gallery owner and collectors) built by Alvar Aalto in Bazoches-sur-Yvelines).

Nathalie Junod Ponsard created permanent and monumental works that can be seen in the public space. In Paris, her principal public and private commissions are - the luminous and monumental *The Unfolding of Light* (2017) integrated to the frontage of the Austerlitz building in Paris, - *Persistent Twilight* (2010-2020) a public commission made by the state, the French Ministry of Culture and the CNAP for the Place Malraux – *L'invisibilité*, a permanent commission made by the ENSAV at Versailles to the Centre Pompidou – *Phenomenology of Light* and *Floating* (2005 – 2010) and, *Lateral Expanses* (2011) a work for the frontage of the Galerie des Gobelins for the Mobilier National or for « Embellir Paris », *Precious Brilliance* (2019) on the Place de l'Europe – Simone Veil. In Rome, permanent works were created for the Palazzo delle Esposizioni and another monumental for the museo dell'arte contemporanea MACRO.

In September 2021, the artist created a carpet-work of art, *Odyssee*, commissioned by the Mobilier National for the large staircase of the Palais de l'Élysée; the in-situ work seems to unfold under us as if we were stepping on a luminous sensation.

SELECTED SOLO SHOW

2022
Maison Louis Carré, Bazoches-sur-Guyonne, Yvelines, FR.

2019
Vertical Wandering, light work on the Maison Louis Carré, Bazoches-sur-Guyonne, Yvelines, FR.

2018
Twilight, a Lateral Wandering, light work - Cour de l'Hôtel Mongelas. Musée de la Chasse et de la Nature commission, Paris, FR.

2015
The densified area, light installation. Jadavpur University, Raja S.C. Mullick Road. Calcutta, IN.
Space is Running Out, in situ light installation. Musée Luxelakes A4 Chengdu, CH.

2014
The Edge of the Visible One, light work on the recumbent statue Saint-Louis, Basilique Saint-Denis. Centre des Monuments Nationaux commissiob
The Slipping of Light, in situ light installation. Museum of Contemporary Art MoCA Chengdu, CH.
The New Wave et Flow of Light, light installations. Outdoor space. Art center The Temple hotel, Beijing. Festival Croisements, CH.
The Thickness of the Void, installation. Omnibus Art Center Clapham, Londres, UK.

2013
Traverser la lumière, Espace Fondation EDF, Paris, FR.

2012
An Ocean of Light, installations spécifiques pour les trois salles d'exposition du Château d'Assas. Le Vigan (Gard), FR.

2010
Electric Landscape, light work in all the exhibition rooms of the Ouralski Guéologuitcheski Mouzeï – Modern Art Gallery, Ekaterinburg. Oural, RU.
Insisting the Reverse Currents, light installation. Galerie Delacroix, Tanger, MA.
La lumière fait cercle, œuvre de lumière dans le Palais des Institutions Italiennes, Palais Moulay Hafid, Tanger, MA.

2009
Spatial Relativity, light installation. Commission of the Institut des Arts Visuels, with the support of the ministère de la Culture, FRAC Centre, Région Centre et Ville d'Orléans, FR.

2007
Tribute to Mark Rothko (Omaggio a Mark Rothko), Laboratorio dell'arte. Museo Palazzo delle Esposizioni Rome, IT.

2005
Trans > Light > Air, installation. Long night of museums, Centre Georges Pompidou. Paris

2004
Weightless dizziness, light installation, produced by the Fondation Bauhaus, the French Embassy of Berlin, l'antenne de Saxe-Anhalt et le Bureau des Arts Plastiques à Berlin. Stiftung BAUHAUS, Dessau, DE.

2002
Deep water, light installation in the Pontoise pool. 1st Nuit Blanche. Mairie de Paris, FR.

2001/2002
To share the Landscape n°2, Installation on the Museum of Contemporary Art of Singapour, Contemporary Art-Biennale, SG.

SELECTED GROUP SHOW

2020
Garden Party URBEX, An Ocean of Air 2, in situ installation, La Chapelle de Clairefontaine, Yvelines, FR.

2020
Circular Wandering, 2020. Light installation on the Courthouse. Evi-lichtungen Hildesheim. International light art biennale, Hildesheim, DE.

2017-2018
In The Center Of Its Halo, in situ installation. French representative in the biennale. Western China International Art Biennale, CH.

2016
Le territoire à l'œuvre, exhibition organised by the ministère de la Culture, le CNAP, Galerie Fernand Léger, Ivry-sur-Seine, FR

2012
Neon la materia luminosa, Museo d'art contemporaneo MACRO, Rome, IT.
Nuit Blanche Montréal, *As a waiting area*, light installation in the skating rink. Tour 1000 de la Gauchetière Art Souterrain. Montréal, CA.

2011
Dazzling Parallax, light installation Paris, Fondation Napoléon, Paris.
Settimana delle Cultura, Musée d'art contemporain MACRO, Rome, It.
Notte dei Musei, Musée d'art contemporain MACRO, Rome, It.
Diagramme(s), Drawing exhibition for the SALON DU DESSIN CONTEMPORAIN 2012 Galerie Spéciale, École Spéciale d'Architecture Paris, Fr.

2007
Crashing wave, light work. *Luce di Pietra*, Contemporary art route franco-italian exhibition, Palais Farnèse à Rome, IT.

2005
Weightless dizziness, vidéo, *E MOTION* "Art & cognition", Galerie Arsenal Torun, 5^o Festival Art & Science, Torun, PL.

2004 – 2005
Rotating immersion, light installation. Jetée des Pâquis Lac Léman. Arbre & Lumières Festival, Geneva, CH

2003
Lumière Subjective, Hypnotic Capsule, Artelab "15 Square de Vergennes", Paris, FR.

2001
Turn on, a conversation with a space, light installation for Delocating Margins de Francis Ng Teck Yong. Site Shophouse, SG.

1999
Biennale Singapore Art, "City/ Community: Singapore Art Today", National Arts Council, SG.

1986
Observatory, Installation (C.Jallais collaboration). Nuit Perpendiculaire. Les Frigos, Quai de la Gare, Paris, FR.

SELECTED PERMANENT WORKS - PUBLIC COMMISSIONS

2021

Odyssee, a carpet-work for the Murat staircase of the Palais de l'Élysée, commissioned by the Mobilier national, Paris.

2019

Dédoublement, commissioned by the Centre national des arts plastiques, the CNAP collection, ministry of Culture, France.

Precious Brilliance, permanent work created for the public space for «Embellir Paris» on the place de l'Europe-Simone Veil in Paris.

2017

The Unfolding of Light, permanent and monumental light work on two of the Austerlitz building's forefronts (designed by the architect Jean Mas agence Ateliers 2/3/4). Property of the Caisse des Dépôts et Consignations. Avenue Pierre Mendès France, Paris.

2015

Silent Variation, permanent light installation both on the public and private space. Commissioned by the city of Vitry-sur-Seine // Les Nouveaux Constructeurs. France.

2011

Lateral Expanses, permanent commission made by the Mobilier national, light installation on the forefront of the Galerie des Gobelins, Manufacture des Gobelins Paris.

Floating Horizon, permanent light work in the contemporary art museum. Museo d'arte contemporanea MACRO, Rome, Italie.

MOBILIER NATIONAL Acquired two works (cardboard) on the idea of luminous feelings for the creation of Savonnerie carpets. 'Mirage' completed in 2021. The 'Orientation spatiale paradoxale' carpet was left in the Salon Murat of the Palais de l'Élysée in 2018.

2007

Penetrating the invisible, permanent light work. Laboratorio dell'arte, Musée Palazzo delle Esposizioni. Rome, Italie

2005-2010

Phenomenology of Light, permanent light installation. Espace Polyvalent. Commande du Centre Georges Pompidou, Paris.

Floating, permanent light installation. Atelier Multimédia. Commande du Centre Georges Pompidou. Paris

2001

To share the landscape, permanent light installation. Atelier Multimédia. Commande du Centre Georges Pompidou. Paris

available visuals



Nathalie Junod Ponsard, *Substance*, 2022, enamelled glass sculpture © courtesy of the artist and baudoïn lebon



Nathalie Junod Ponsard, *Thickness of Light*, 2013. Installation at the EDF Foundation, exhibition from 5 October to 10 November 2013 © courtesy of the artist and baudoïn lebon.



Nathalie Junod Ponsard, *Odysée*, 2021. A carpet work for the Murat staircase at the Elysée Palace, 73m². Commissioned by the Mobilier National © Guillaume Thomas courtesy of the artist and baudoïn lebon.



Nathalie Junod Ponsard, *Circular Wandering*, in situ on the Courthouse. International Light Biennial in Hildesheim, Germany. EVI LICHTUNGEN. From 23 to 26 January 2020 © Sara Foerster courtesy of the artist and baudoïn lebon.



Nathalie Junod Ponsard, *Substance*, 2022, enamelled glass sculpture © courtesy de l'artiste et baudoïn lebon.



Nathalie Junod Ponsard, *Odysée*, 2021. A carpet work for the Murat staircase at the Elysée Palace, 73m². Commissioned by the Mobilier National © Guillaume Thomas courtesy of the artist and baudoïn lebon